

SPRINGERBAAI ECO ESTATE



Rooikraans & Suurvy REMOVAL PROCEDURE

REM001

	TRUSTEE NAME	DATE	APPROVED	DATE
Reviewed by:	Pieter van Greunen	March 2019		
Reviewed by:	Mark Rosenbaum	March 2019		
Reviewed by:	Andre Nel	April 2019		
Reviewed by:	Trustees	April 2019	<u>Trustees</u>	<u>April 2019</u>
Reviewed by:				
Reviewed by:				
Reviewed by:				

CONTENTS

1	Aim and Purpose	3
2	Scope	3
3	Definitions & Abbreviations.....	3
4	Responsibilities.....	3
5	General.....	3
5.1	Contravention	3
6.	Additional Information re the Suurvy removal Process	3
6.1	Detailed Procedure for suurvy	4
6.1.1	Steps in the Process	4
7.	Additional Information re the Rooikrans Process	4
7.1	Detailed Procedure for rooikrans	4
7.1.1	Steps in the Process	4
8.	Annexures	5

1 Aim and Purpose

To dramatically reduce the encroachment of suurvy on the estate's grazing lawns as well as controlling and eradicating alien trees on the property to reduce the fire risk and in line with Springerbaai's commitments in the EMP. Whilst eradication of alien trees, to also provide firewood for the Home owners to buy.

2 Scope

This procedure is applicable to Springerbaai Management and contractors.

3 Definitions & Abbreviations

Term	Definition/Explanation
Gropper	An implement in front or behind the tractor
EMP	Environmental Management Plan

4 Responsibilities

Trustee of Environment Portfolio – To ensure that all procedures are in place and represent the views of the Trustees and Home Owners.

The Estate Manager - To ensure that the procedure is implemented and followed accordingly. To determine yearly as part of the Budget what the quantum is of work to be done in the next year.

Superintendent - To manage the procedure and to ensure that the process runs smoothly as well as to supervise the execution by workers.

5 General

5.1 Contravention

This removal of suurvy is important to allow the natural grazing for the wildlife to grow and provide adequate grazing capacity for our game. The removal of rooikrans is important for the estate as this is an alien tree and not aligned with our Ethos, and it increases the impact of bush fires.

Breach of this Procedure by any employee may lead to disciplinary action and affect the performance evaluation.

6. Additional Information re the Suurvy removal Process

- The proposed areas for removal (2018 – 2020) are visible on Annexure 1.
- Quotes should be obtained from Farmers in annexure before a programme to eradicate suurvygie
- The current price for tractor, gropper, diesel and driver is R 330.00 per hour. Quote to be obtained before sections are cleared.
- We should acknowledge that suurvy is part of the ecosystem at Springerbaai and thus we are not trying to eradicate the plant entirely, we are trying to reduce the suurvy and then to be in the position to only manage it accordingly as well as provide sufficient grazing capacity for the animals.

- The reason for removing this plant is to increase the estate's carrying capacity and provide sufficient grazing.
- There are several sandy patches on the estate and in order to keep the sand compact we should aim to leave suurvy on those patches.

6.1 Detailed Procedure for suurvy

6.1.1 Steps in the Process

- Determine from budget how many ha should be cleared and budget available.
- Larger affected areas should be removed with a gropper and smaller areas can be removed by Springerbaai staff/casuals.
- When gropper is clearing the area, it is crucial that all patches with indigenous plants are to be avoided.
- Staff/casuals move in after the gropper and remove the remaining suurvy.
- The gropper only pushes the suurvy for 15m before the "teeth" are full. Staff should assist operator to remove plant material stuck inbetween the gropper blades.
- This process should aim to be finished each year before the rainy season starts (August – November).
- A mixture of indigenous grass seeds and plants should be planted on the exposed areas to allow a vegetative cover (with the aim to establish original vegetation i.e. fynbos up on slopes above bird hide) to establish and prohibit any suurvy growth. This will be watered manually if there is no rain.
- As soon as a section is removed it should be documented on the "Suurvy removal map" in the office.
- The rows of suurvy will be set alight to reduce transport costs. Obviously, precautions have to be taken when doing this. Refer to Ecological burn procedures.
- Another option is that the gropper places the suurvy in rows and the rows be left to decompose. These suurvy heaps should be monitored to ensure that the suurvy does not grow again.
- The sections cleared to be followed up every 3 months to ensure that there is no regrowth of suurvy.
- A monitor programme should be in place with photos, etc to show how the areas recover that been cleared and replanted.

7. Additional Information re the Rooikrans Process

- One should aim to remove at least three to five trees once a month, but the budget would determine every year exactly how much effort to be spent on this activity.
- When rooikrans is removed on dunes, ensure necessary steps are taken to keep dune stable for the future. In order to stabilise the dune, a thin layer of rooikraans brush to be left on the bare dune area, but the majority of the brush to be removed to lower the fuel load and fire risk. In addition, replacement vegetation should be planted where big areas are cleaned up
- The time-consuming exercise is to remove the brush and carry the tree logs to the vehicle.
- A full bakkie load is equivalent to 12-wheel barrows
- A full bakkie is sold at R750 – including delivery to houses on the Estate.

7.1 Detailed Procedure for rooikrans

7.1.1 Steps in the Process

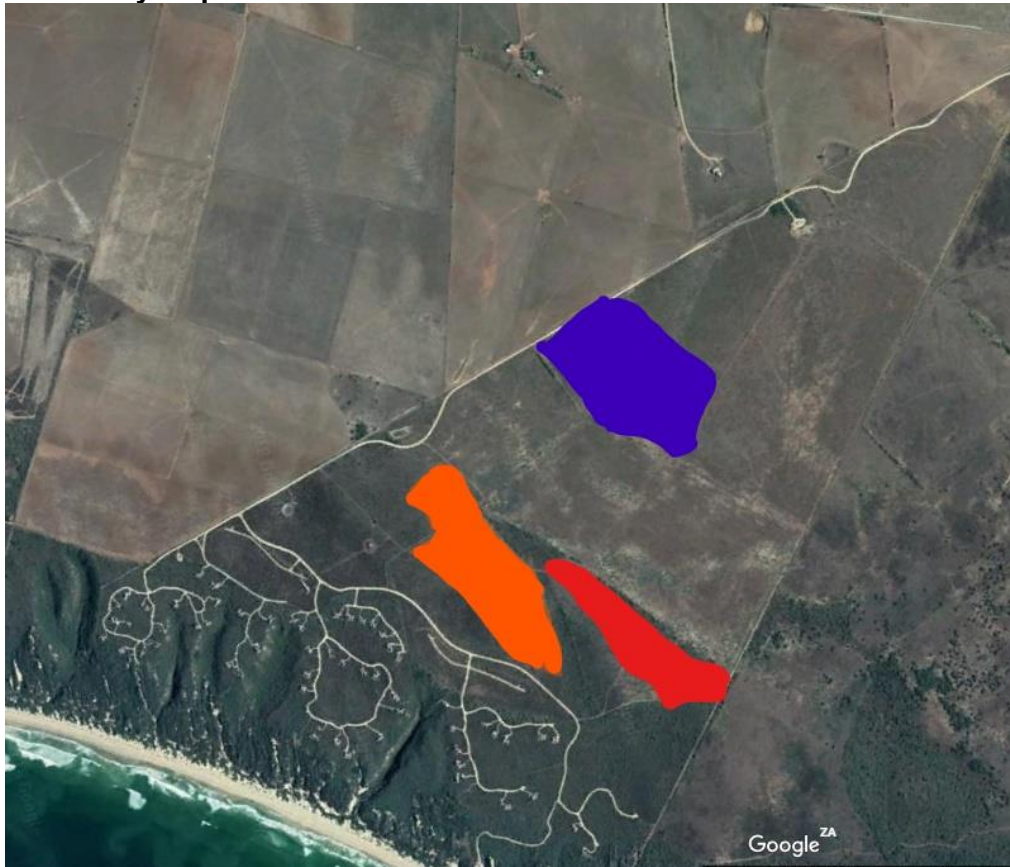
- Determine which affected areas can be removed. This will be in line with the Fire Risk documents clearing from the fences inward and near structures. The areas with the highest density of alien trees should be a priority after above guideline. The area identified should

be divided into sections to ensure that no erosion is caused and that a section cleared can return to its natural state and the uncleared section serves as protection against the elements.

- Next to structures (e.g. Board walks, solar panels) all rooikrans up to 3m should be removed and less flammable vegetation should be planted. Further away from the structures the rooikrans will be removed (over time) as and when bigger trees and bush can be planted to not leave the board walks exposed and visible.
- The focus must be from the Eastern side (Nautilus side) by clearing from a point inward.
- Branches are removed from tree and cut down.
- Fresh green branches are priority to be removed as they pose the biggest threat.
- The tree is then cut into smaller logs which are transported to the gate house.
- At the gate house, staff split the logs into smaller pieces, which are stacked and stored at the gatehouse for future orders by Home Owners.
- It is vitally important that all sections cleared have a follow up clearing every 6 months for any regrowth of rooikrans seedlings and saplings.

8. Annexures:

A. Suurvy Map

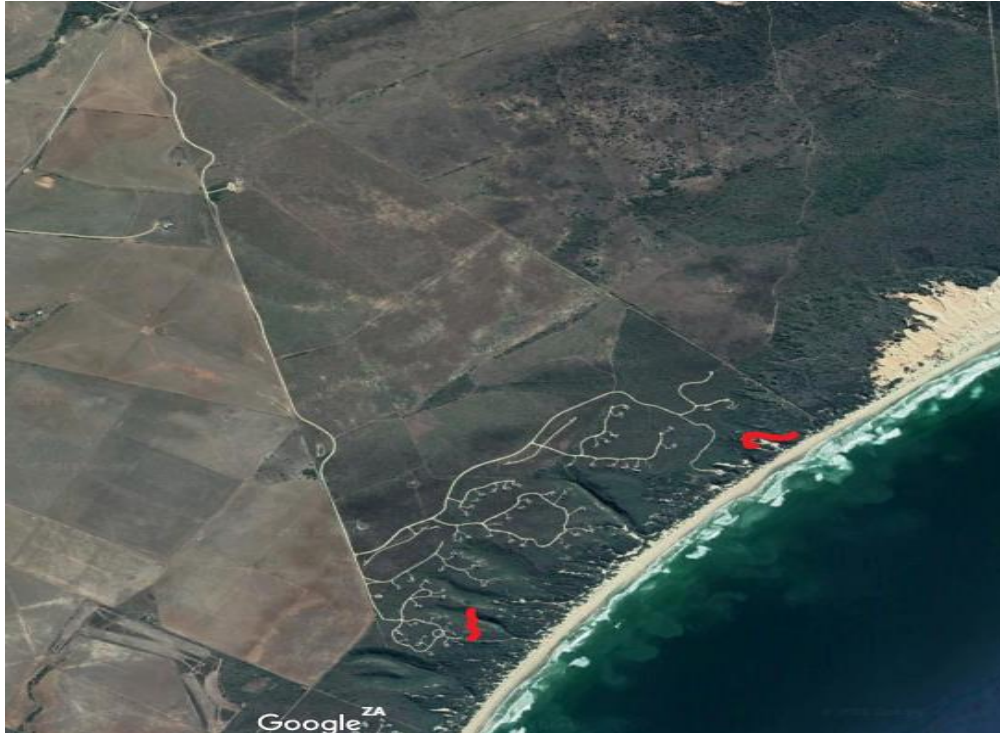


Blue = 2018 – section removed with gropper

Orange = 2019

Red = 2020

B. ROOIKRAANTS MAP 2019



Annexure C:

Potential providers of Tractor and Gropper (only farmer currently with a gropper is Frikkie Oosthuizen in the area) - if the estate does not have our own. (cost 10k for 4 weeks)

TRACTORS:

Frikkie Oosthuizen	082 575 2835,	R 330.00 per hour.
Rikkie van Rensburg	082 784 8238	R 480.00 per hour
Hennie Pienaar	082 441 7212	R 450.00 per hour

THE HOA AND THEIR REPRESENTATIVES, IN TAKING THESE PRECAUTIONS AND IMPLEMENTING THESE CRITICAL STRATEGIES, REACTION PLANS AND PROPOSALS IN GOOD FAITH AND DILIGENCE DO NOT ACCEPT ANY LIABILITY WHATSOEVER FOR ANY INJURY OR DEATH OF ANY PERSON OR THE LOSS OR DESTRUCTION OF OR DAMAGE TO ANY PROPERTY, WHETHER ARISING FROM FIRE, THEFT OR ANY OTHER CAUSE WHATSOEVER AND BY WHOMSOEVER CAUSED OR ARISING FROM NEGLIGENCE OR GROSS NEGLIGENCE BY THE HOA AND OR THEIR REPRESENTATIVES OR ANY EMPLOYEES. BY ENTERING THESE PREMISES, YOU OR YOUR HEIRS, EXECUTORS AND ADMINISTRATORS ALSO AGREE THAT YOU WILL INDEMNIFY THE HOA AND THEIR REPRESENTATIVES AND HOLD THEM HARMLESS AGAINST ANY CLAIM WHICH MAY BE MADE AS A RESULT OF SUCH LOSS, DAMAGE, DESTRUCTION, DEATH OR BODILY INJURY.